



# Crescent Arts: Accessibility Guide for Woodend Gallery

Guide last updated: 16th March 2022  
<https://www.crescentarts.co.uk>  
[info@crescentarts.co.uk](mailto:info@crescentarts.co.uk)

# Level Access

- 1 - The entrance to woodend is flanked by two pillars.
- 2 - The driveway down is on a slightly downward slope.



# Front of House

3 - Main entrance has level access with a ramp, the ramp is permanent.  
Cobblestones may produce a slightly uneven surface for walking on.

4 - There are ramp guards are stone slabs that jut out on the side.

5 - There is only one disabled parking space.



# Front of House - Continued

6 - A meter from the front door two elevated steps are present for entry.

7 - Main entrance has level access.  
From this point you are able to access:

- Reception
- The Sitwell Cafe
- Level floor lift
- Toilets
- Gallery space
- Entrance to tenant space

The entrance door is heavy and requires a sturdy push to open.



# Foyer & Reception

8 - Entrance to Gallery is accessible by walking through the foyer straight to the doorway ahead. The doorway is usually flanked by one or two A-Boards.

9 - Just before entrance to the Sitwell cafe is a section of carpet strip.

After heading into the Sitwell cafe the cafe space is on the left hand side, with the cafe counter on the right hand side. The entrance to the Gallery space is straight ahead and to the right.



# Cafe space and Gallery entrance

10 - The fireplace has a low raised carpet strip close to the floor, see or have low vision – this is a potential danger.

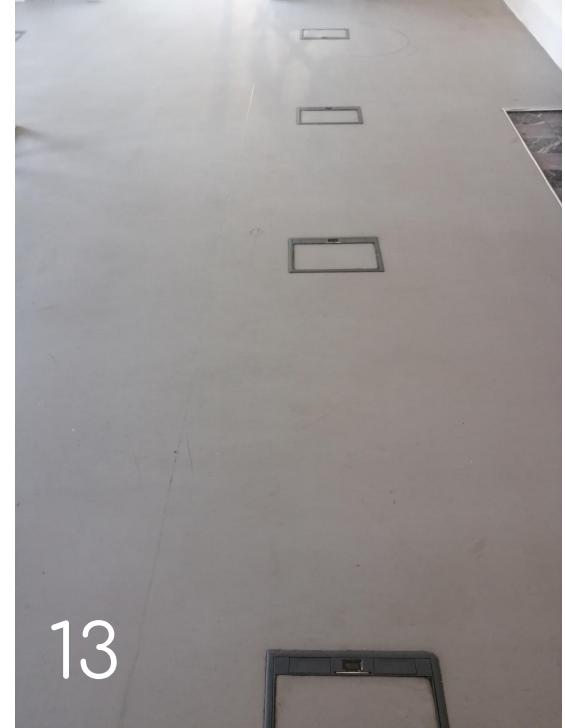
11 - There is a short raised surface under the threshold in the door , again a potential tripping hazard if you are visually impaired.



# Cafe space and Gallery entrance

12 - There is quite often a white plinth here on which will be a questionnaire and drop off box for people to fill out questionnaires.

13 - There are slightly raised floor sockets, these aren't too much of a problem, but something to watch out for regarding accessibility for the visually impaired.



# Cafe space and Gallery entrance

14 - In the first section of the gallery space are two windows on the left hand side of the room, they also have shutters which will always be open but they can be shut if needed. They are also quite heavy to open and requires a sturdy pull to open.

15 - In the gallery space there are slightly raised floor sockets along the middle section of the floor.



# Cafe space and Gallery entrance - Continued

As you enter through the double doors they will already be open and normally stay that way, there might be door wedges hidden behind the doors to prevent anyone tripping up on them.

16 - Towards the left hand side of the room as you're entering through the double doors there is a pillar which supports the mezzanine above. This section of the gallery room is very open and light and the windows can be opened.

17 - To the right hand side of entering through the double doors there is another door which can be opened for access to toilet, sitwell library, the foyer and then back around to the cafe.



# Cafe space and Gallery entrance - Continued

18 - From the first section of the gallery space into the second section there is a floor strip which separates the spaces, this is slightly raised by a few millimetres.

19 - About three metres from the first mezzanine pillar on the left hand side of the room there is a second one further across in the top left hand corner.



# Cafe space and Gallery entrance - Continued

20 - At the top right hand side of the gallery there is a another glass door. This will normally be closed and is only used for exhibition installs.

It's also worth noting after rainfall the gallery space can be prone to leaks onto the gallery floor, these will be rectified with water buckets which is something to keep in mind. This is a small term solution until further action is taken.

